

GIUNTI FLESSIBILI (Flexible couplings)

I giunti di accoppiamento R&D sono caratterizzati dall'impiego di un particolare polimero dalle eccezionali doti di flessibilità e resistenza. Sono disponibili per la quasi totalità degli invertitori attualmente in commercio e vengono forniti con dadi e bulloni pronti per l'installazione.

The R&D flexible couplings are characterized by the use of a particular polymer with exceptional qualities of flexibility and strength. Are available for most of the gearboxes currently on the market and are provided with nuts and bolts ready for installation.



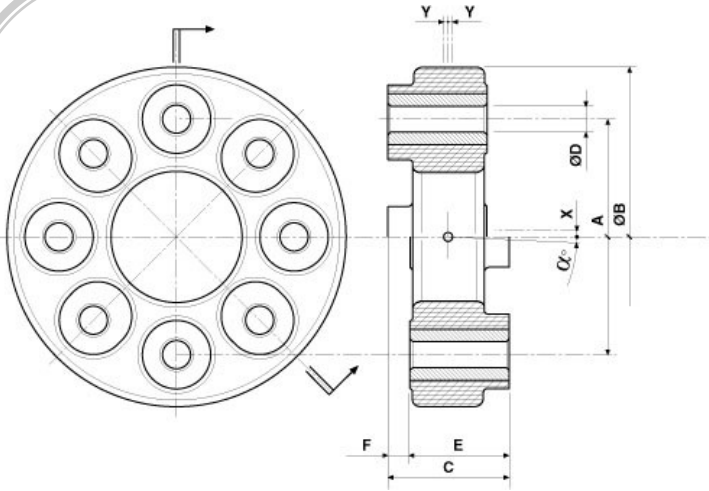
R&D

Codice (Code)	Modello (Model)	Applicazioni (Applications)	Diam. max mm.	Lunghezza (Length)	N. bulloni (N.of bolts)	Centro Fori mm. (Bolt Hole Diameter)	D. Bulloni (bolts diam)	Capacità (Capacity) HP/100 giri
61.2910001	910-001	BW, PRM, TECHNODRIVE	115,00	32,50	4	82.5	M 10	5
61.2910002	910-002	YANMAR	115,00	32,50	4	78	M 10	3
61.2910003	910-003	BW, PRM, HURTH, MPM, TWIN DISC	152,00	47,50	6	120.6	1/2 UNF	20
61.2910004	910-004	BW, PRM, HURTH	115,00	35,60	4	82.5	3/8 UNF	7
61.2910006	910-006	TWIN DISC, HURTH, MPM	153,00	47,50	6	120.6	1/2 UNF	20
61.2910009	910-009	BW, PRM, HURTH, VOLVO	127,00	45,00	4	108	7/16 UNF	13
61.2910012	910-012	YANMAR	127,00	45,00	4	100	M 10	10
61.2910014	910-014	BW, PRM, HURTH, TECHNODRIVE	115,00	32,50	4	82.5	M 10	3
61.2910018	910-018	PRM	190,00	60,70	6	152.4	5/8 UNF	40
61.2910020	910-020	VOLVO	115,00	32,50	4	80	M 10	5
61.2910022	910-022	TWIN DISC	222,00	44,50	8	190.5	1/2 UNF	59
61.2910024	910-024	TWIN DISC	276,00	56,70	8	222	5/8 UNF	85
61.2910025	910-025	BW, PRM, HURTH, MPM, TWIN DISC	152,00	49,80	6	120.6	1/2 UNF	28
61.2910026	910-026	TWIN DISC	152,00	49,80	6	120.6	1/2 UNF	28
61.2910029	910-029	BW, HURTH, VOLVO	143,00	52,40	4	108	7/16 UNF	20
61.2910033	910-033	TWIN DISC, MPM, HURTH	152,00	55,40	6	120.6	1/2 UNF	37
61.2910037	910-037	YANMAR (Kanzaki)	143,00	51,10	4	108	7/16 UNF	13

GIUNTI FLESSIBILI (Flexible couplings)

I giunti in gomma **REGGIANI** sono prodotti in due modelli compatibili con i più comuni riduttori in commercio per potenze da 10 a 110 HP.

The **REGGIANI** couplings are produced in two models compatible with the most common gearboxes on the market for powers from 10 to 110 HP.



A=82,5 B=120 C=44

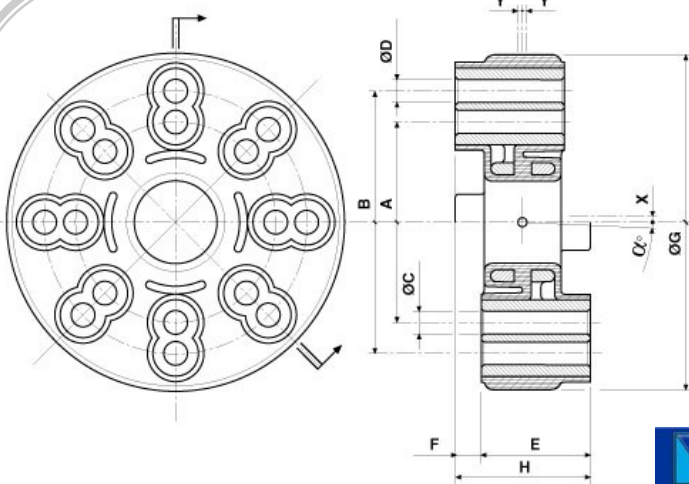
D=10,2 E=36 F=9

$\alpha=2^\circ$ X=1,5 Y=3



Max potenza (Power) HP 25

Cod. **39.20FC01140** giunto 140 Nm



A=82,5 B=108 C=10

D=11,2 E=44 F=12

G=140 H=56

$\alpha=2^\circ$ X=1,5 Y=3



Max potenza (Power) HP 110

Cod. **39.20FC02200** giunto 200 Nm